

Dry Creek Greenway Multi-use Trail
Meadow Oaks Neighborhood Association
February 21, 2013





Meeting Purpose

- Overview of Trail Planning Process
- Prior Phase of Trail Planning
- Current Phase of Trail Planning
- Gauge Community Values & Interests
- Upcoming Public Outreach Opportunities



Trail Planning Process

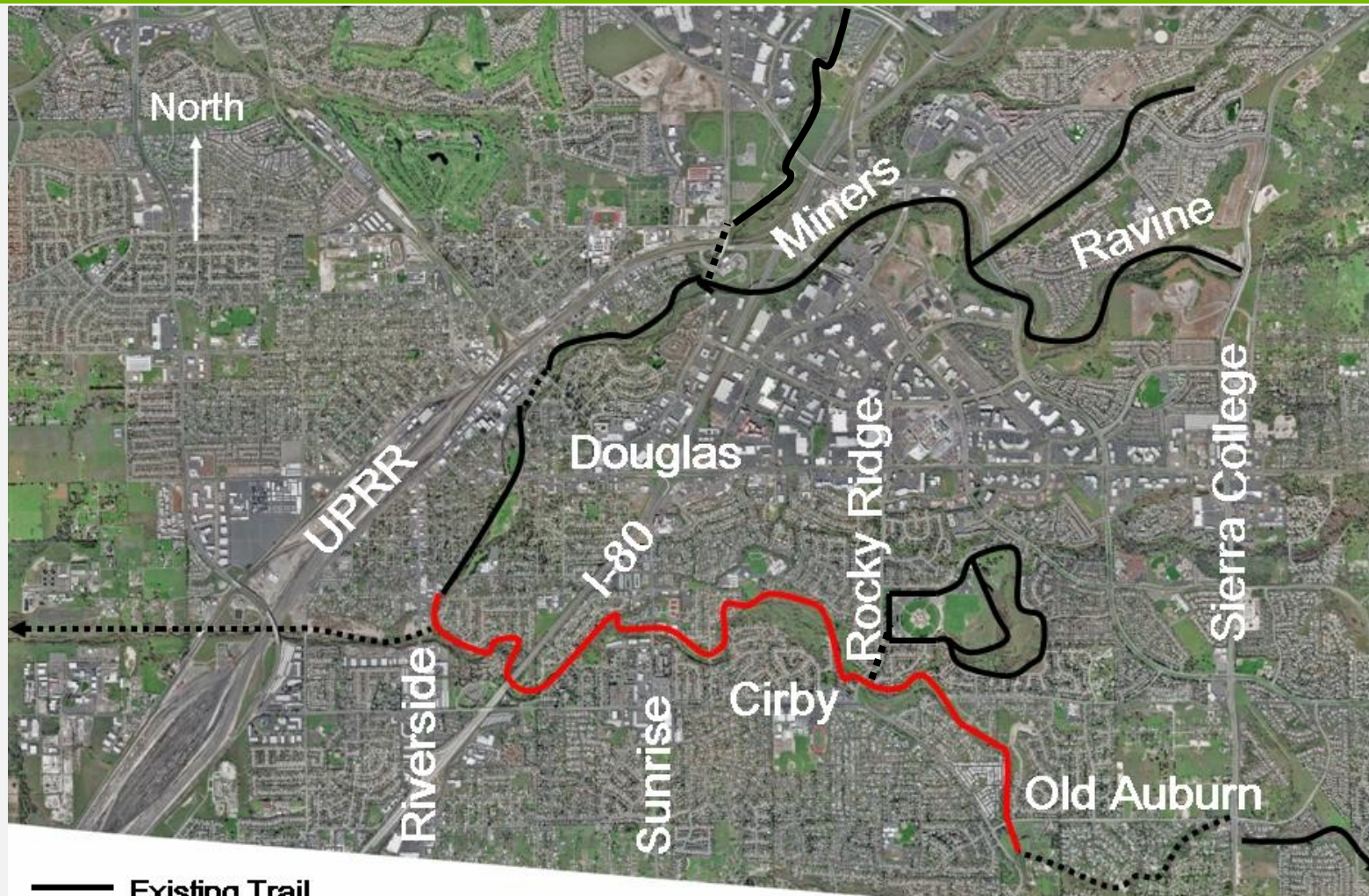
1. General Plan & Bicycle Master Plan
2. Planning & Feasibility Analysis (2008-2010)
3. Updated Feasibility Analysis, Environmental Review & Preliminary Engineering (2012-14)
4. Final Design & Permitting (2015-16)
5. Phased Construction (2016-2025)



2008-2010 Planning & Feasibility Study – Caltrans Planning Grant

- Study feasibility of trail along Dry, Cirby & Linda Creek
- Assess public interests & concerns
- Identify & evaluate trail alternatives

Overview Map



- Existing Trail
- Study Area
- - - - - Future Planned Trails



2008-2010 Planning & Feasibility Study – Public Participation

- Stakeholder Representative Group (6 meetings)
- Public Workshops (2)
- Neighborhood Association Meetings
- Parks & Recreation Commission
- Transportation Commission
- City Council (March 2010)



Dry Creek Greenway Planning & Feasibility Study – Purpose & Needs Statement

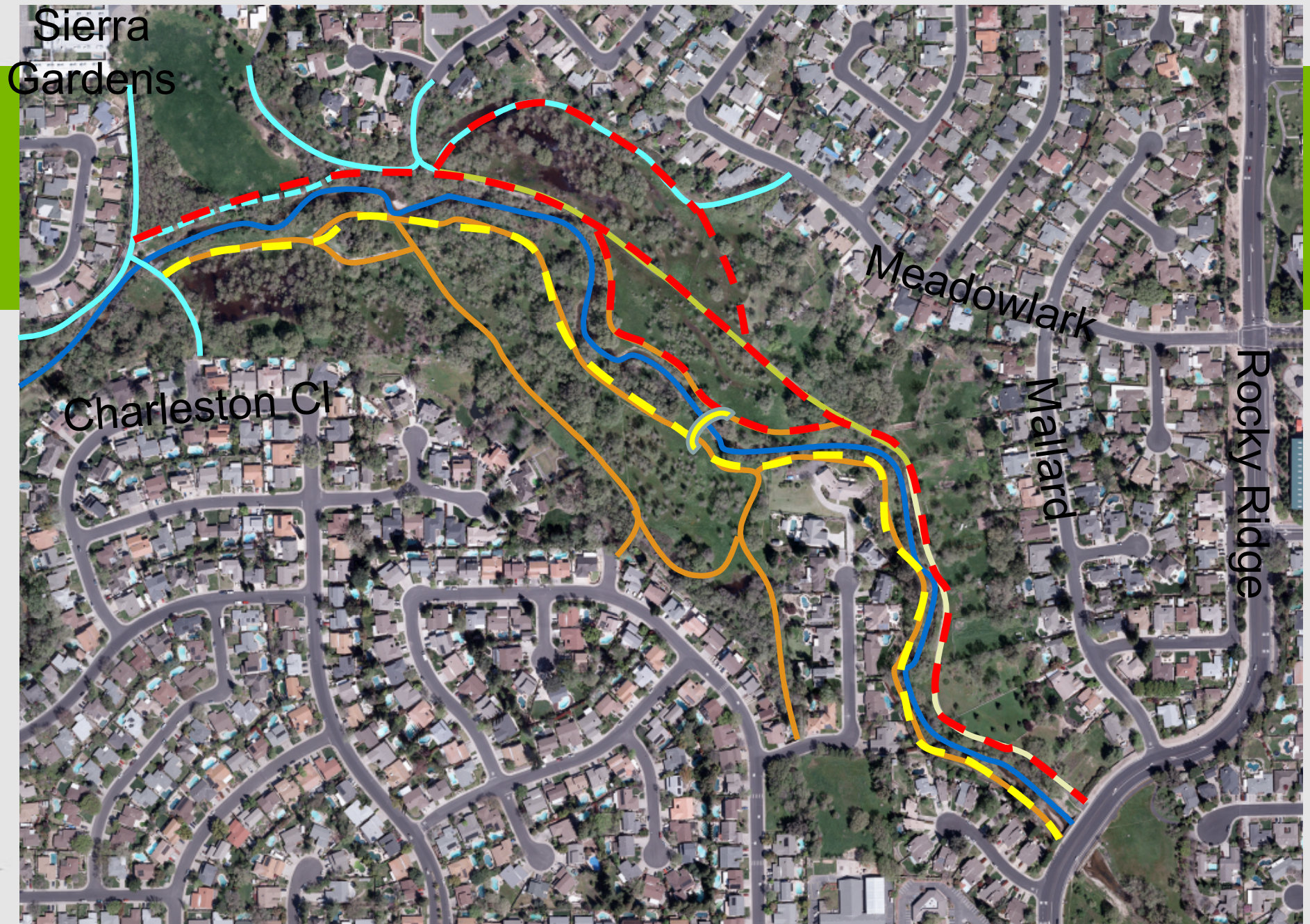
- Multi-use path for bicycling, walking, running, and dog-walking, for fun, education, recreation, health, and transportation.
- Safe, comfortable, and highly connected bike route includes local & regional connections
- Challenges include neighborhood compatibility, right-of-way, roadway crossings, existing utilities, and environmental factors



2008-2010 Planning & Feasibility Study – Summary of Report

- Existing Conditions
- Opportunities & Constraints
- Purpose & Needs
- Alternatives Analysis
- Recommended Path Alignment
- Design Treatment

www.roseville.ca.us/transportation/bikeways/dc_study.asp



Sierra
Gardens

Charleston Ct

Meadowlark

Mallard

Rocky Ridge



2012-14 EIR Process - Overview

City Council Direction in March 2010

- Update Feasibility Study (Hillcrest & Sunrise areas)
- Proceed with Preliminary Engineering
- Prepare Environmental Impact Report



2012-14 EIR Process – Updated Feasibility Study

- Stakeholder Meeting & Field Walk
- Develop Alignment Options
- Technical Studies
 - ❖ Topographic Surveys
 - ❖ Hydraulics Analysis
 - ❖ Biologist Field Walk
 - ❖ Visual Simulations
- Public Review of Analysis



2012-14 EIR Process – Neighborhood Comments

- User Conflicts – Maintain Unpaved Paths
- Public Safety (Fire & Police)
- Private Access Easement to Homes on Mallard & Meadowlark
- Habitat & Wildlife/Open Space
- Flooding & Erosion

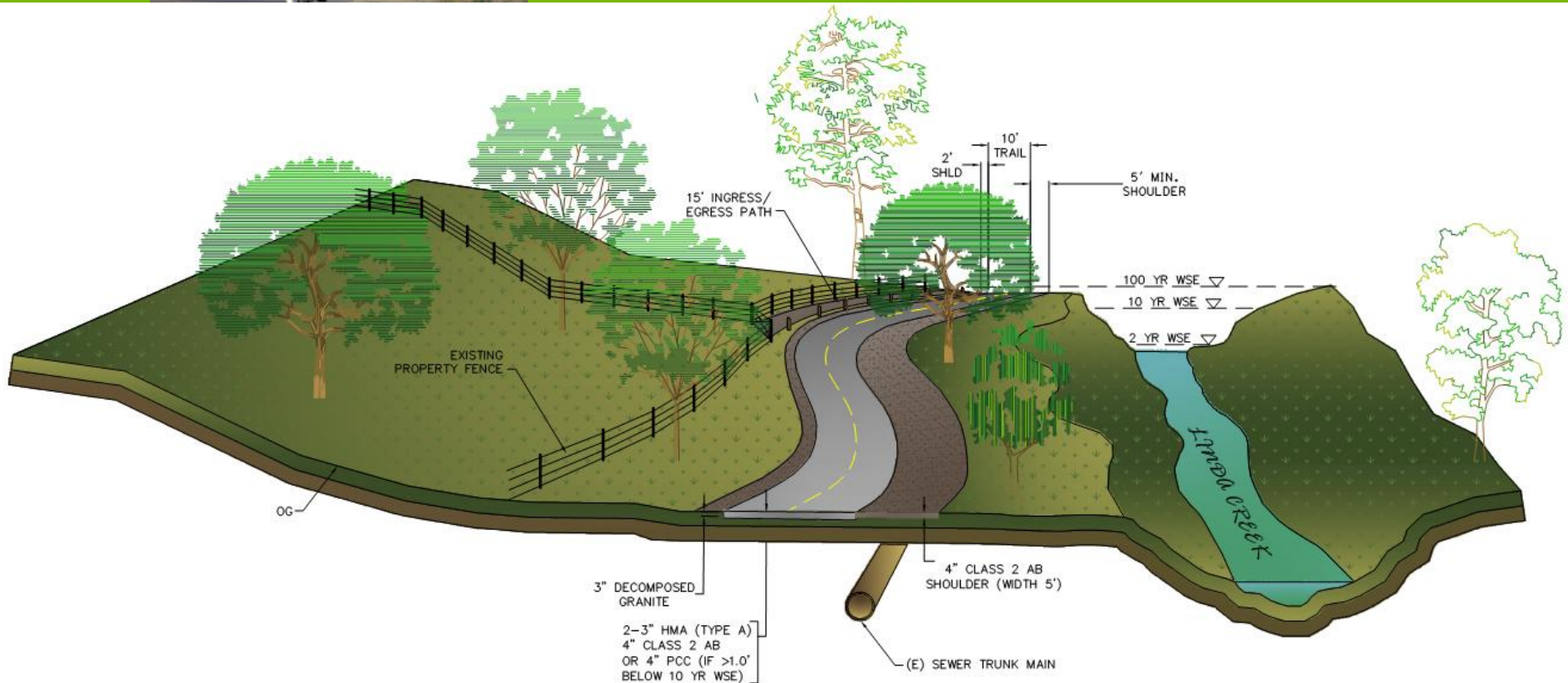


2012-14 EIR Process – Public Participation for Feasibility Study

- Stakeholder Representative Group Meeting #9
- Community Open House – March 21, 2013
- Online Survey Tool
- Stakeholder Representative Group Meeting #10

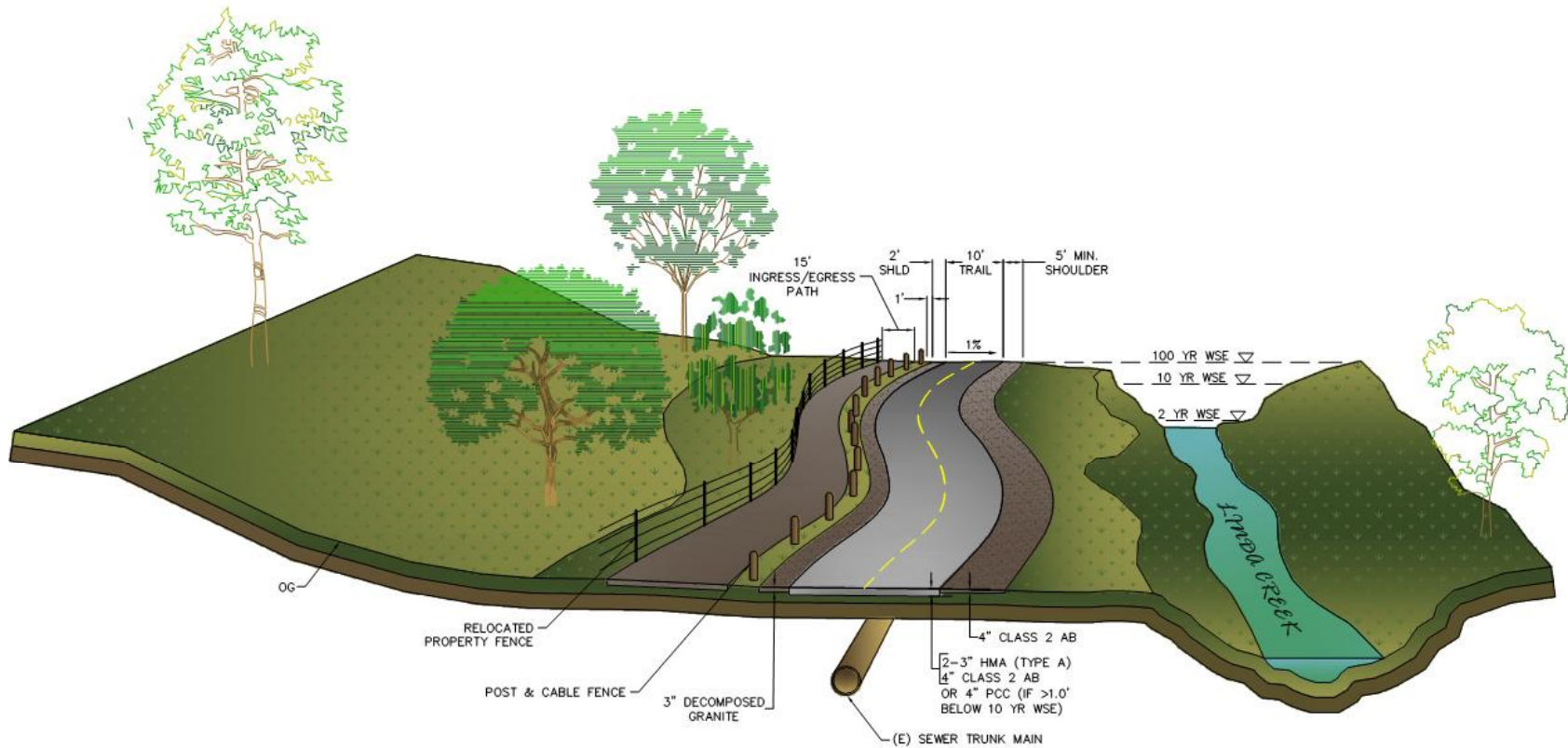


Segment 7 – Sierra Gardens



TYPICAL TRAIL SECTION
SEGMENT 7 – SIERRA GARDENS
WITHIN CITY OWNED PROPERTY

Segment 7 – Sierra Gardens



TYPICAL TRAIL SECTION
SEGMENT 7 – SIERRA GARDENS
WITHIN PRIVATE PROPERTY